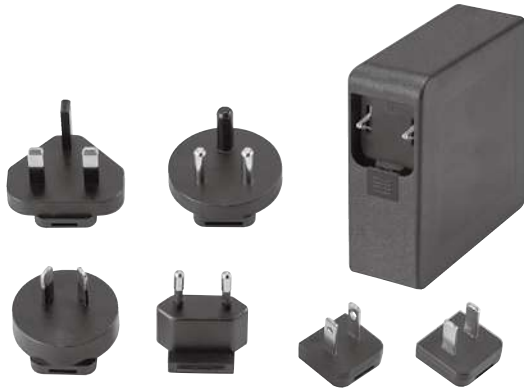


## AC/DC Interchangeable Adapter



### Features

- 100-240VAC Universal Input
- LED Indicator
- Active PFC Function
- Protections:
  - Short circuit / Over voltage / Over current
  - Over temperature (optional)
- Energy Efficiency Level VI or CoC Tier II
- No Load Power Consumption  $\leq 0.21W$  (VI),  $\leq 0.15W$  (Tier II)
- MTBF > 100,000 hours

### EA1091S X R - vv PP

- X:** Output range  
**R:** Interchangeable AC plug:
  - U: USA • E: EU • K: UK • A: SAA • C: China
  - S: South Africa • B: Korea • I: India
- vv:** Specified output voltage, i.e. 12 is 12VDC  
**PP:** DC plug type, i.e. Code 01 for 5.5x2.1mm or other options (refer to the appendix page)

MODEL No.	MAX. OUTPUT POWER (W)	OUTPUT VOLTAGE (Vo)	MIN. LOAD (Io)	MAX. LOAD (Io)	LOAD REGULATION	LINE REGULATION	RIPPLE & NOISE
EA1091SAR	80W	12~17V	0A	6.66A	± 5%	± 1%	270mV
EA1091SBR	80W	18~24V	0A	4.44A	± 5%	± 1%	350mV
EA1091SCR	80W	25~32V	0A	3.20A	± 5%	± 1%	450mV
EA1091SDR	80W	33~43V	0A	2.42A	± 5%	± 1%	650mV
EA1091SER	80W	44~56V	0A	1.81A	± 5%	± 1%	750mV
EA1091SFR	90W	12~17V	0A	7.50A	± 5%	± 1%	270mV
EA1091SGR	90W	18~24V	0A	5.00A	± 5%	± 1%	350mV
EA1091SHR	90W	25~32V	0A	3.60A	± 5%	± 1%	450mV
EA1091SJR	90W	33~43V	0A	2.72A	± 5%	± 1%	650mV
EA1091SKR	90W	44~56V	0A	2.04A	± 5%	± 1%	750mV
EA1091SMR	100W	25~32V	0A	3.33A	± 5%	± 1%	450mV
EA1091SNR	100W	33~43V	0A	3.03A	± 5%	± 1%	650mV
EA1091SQR	100W	44~56V	0A	2.27A	± 5%	± 1%	750mV
EA1091SPR	100W	24V	0A	4.16A	± 5%	± 1%	360mV

#### NOTE:

- 1 : Ripple & Noise is measured by using 20MHz bandwidth limited oscilloscope and terminated each output with a 0.1uF ceramic capacitor & parallel with 47uF aluminum capacitor at full load and nominal line.
- 2 : Line regulation is defined by changing  $\pm 10\%$  of input voltage from nominal line at rated load.
- 3 : Max. Power (W)  $\geq V_o \times I_o$

### Electrical Specification

#### INPUT

- Input Range: 100 to 240 VAC
- Frequency: 50 to 60Hz
- Input Current:  $\leq 2.0A$
- Inrush Current: 80A/100VAC 160A/230VAC
- Hold Up Time:  $\geq 8.3ms$
- Turn On Time:  $\leq 3s$

#### OUTPUT

- Short Circuit Protection: Auto Recovery
- Over Voltage Protection: Auto Recovery or Latch-off
- Over Current Protection: Auto Recovery
- Over Temperature Protection: Auto Recovery or Latch-off (optional)

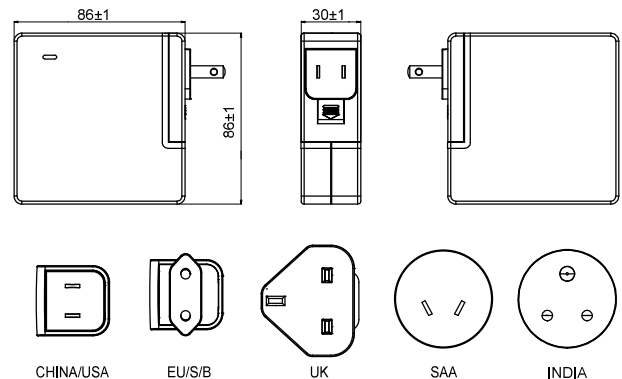
#### ENVIRONMENT

- Operating Temperature: 0 to 40°C
- Storage Temperature: -20 to 85°C
- Operating Humidity: 10% to 90%
- Storage Humidity: 5% to 95%

#### SAFETY

- Complied with UL/cUL 62368-1, TUV EN 62368-1, CB IEC 62368-1, FCC, CE

### Mechanical Specification



- Case Size: 86L x 86W x 30H (mm)
- AC Plug: U: USA, E: EU, K: UK, A: SAA, C: China  
S: South Africa, B: Korea, I: India
- Weight: 400g