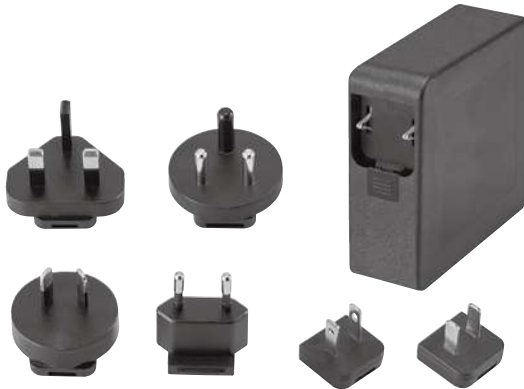


## USB Type-C Adapter



### Features

- USB Power Delivery Function
- 100-240VAC Universal Input
- LED Indicator
- LPS Compliance
- Protections:
  - Short circuit / Over voltage / Over current
  - Over temperature (optional)
- Energy Efficiency Level VI
- No Load Power Consumption  $\leq 0.21W$
- MTBF > 100,000 hours

### EA1062S X R - PP

- X:** Output range  
**R:** Interchangeable AC plug:
  - U: USA • E: EU • K: UK • A: SAA • C: China
  - S: South Africa • B: Korea • I: India
- PP:** DC plug code 92 for USB Type-C

MODEL No.	MAX. OUTPUT POWER (W)	OUTPUT VOLTAGE (Vo)	MIN. LOAD (Io)	MAX. LOAD (Io)	LOAD REGULATION	LINE REGULATION	RIPPLE & NOISE
EA1062SAR	65W	5V	0A	3A	$\pm 5\%$	$\pm 1\%$	100mV
		9V	0A	3A	$\pm 5\%$	$\pm 1\%$	180mV
		12V	0A	3A	$\pm 5\%$	$\pm 1\%$	240mV
		15V	0A	3A	$\pm 5\%$	$\pm 1\%$	300mV
		20V	0A	3.25A	$\pm 5\%$	$\pm 1\%$	360mV
EA1062SBR	60W	5V	0A	3A	$\pm 5\%$	$\pm 1\%$	100mV
		9V	0A	3A	$\pm 5\%$	$\pm 1\%$	180mV
		12V	0A	3A	$\pm 5\%$	$\pm 1\%$	240mV
		15V	0A	3A	$\pm 5\%$	$\pm 1\%$	300mV
		20V	0A	3A	$\pm 5\%$	$\pm 1\%$	360mV

#### NOTE:

- 1 : Ripple & Noise is measured by using 20MHz bandwidth limited oscilloscope and terminated each output with a 0.1uF ceramic capacitor & parallel with 47uF aluminum capacitor at full load and nominal line.
- 2 : Line regulation is defined by changing  $\pm 10\%$  of input voltage from nominal line at rated load.
- 3 : Max. Power (W)  $\geq V_o \times I_o$

### Electrical Specification

#### INPUT

- Input Range: 100 to 240 VAC
- Frequency: 50 to 60Hz
- Input Current:  $\leq 2.5A$
- Inrush Current: 50A/100VAC 100A/230VAC
- Hold Up Time:  $\geq 8.3ms$
- Turn On Time:  $\leq 3s$

#### OUTPUT

- Short Circuit Protection: Auto Recovery
- Over Voltage Protection: Auto Recovery
- Over Current Protection: Auto Recovery
- Over Temperature Protection: Optional

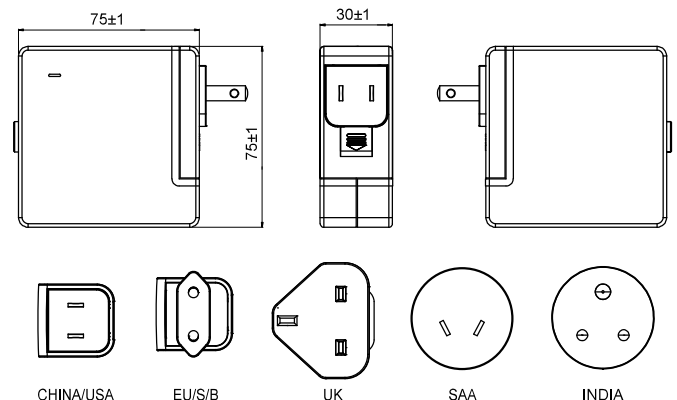
#### ENVIRONMENT

- Operating Temperature: 0 to 40°C
- Storage Temperature: -20 to 85°C
- Operating Humidity: 10% to 90%
- Storage Humidity: 5% to 95%

#### SAFETY

- Certified for whole series: UL/cUL 62368-1, TUV EN 62368-1, CB IEC 62368-1, FCC, CE
- Certified for assigned models: CCC, KC

### Mechanical Specification



- Case Size: 75 x 75W x 30H (mm)
- AC Plug: U: USA, E: EU, K: UK, A: SAA, C: China  
S: South Africa, B: Korea, I: India
- Weight: 250g