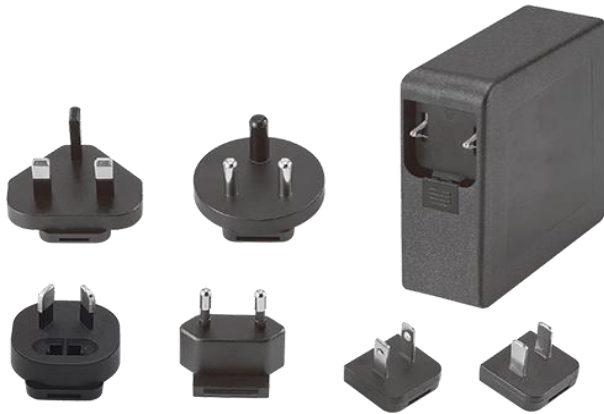


GaN Medical AC/DC Interchangeable Adaptor

Features

- 2 x MOPP Compliance
- IEC/EN60601-1, IEC/EN62368-1 Compliance
- EMC IEC60601-1-2 (ed.4.1) Compliance
- Gallium Nitride Based Design
- LED Indicator (optional)
- Protections:
 - Short circuit / Over voltage / Over current
 - Over temperature
- Energy Efficiency Level VI or CoC Tier II
- No Load Power Consumption $\leq 0.21W$ (VI), $\leq 0.15W$ (Tier II)
- MTBF > 100,000 hours



EM1067S X R - vv PP

- X:** Output range
R: Interchangeable AC plug:
 • U: USA • E: EU • K: UK • A: SAA • C: China
 • S: South Africa • B: Korea • I: India
vv: Specified output voltage, i.e. 12 is 12VDC
PP: DC plug type, i.e. Code 01 for 5.5x2.1mm or other options (refer to the appendix page)

General Specification

OUTPUT

MODEL No.	MAX. OUTPUT POWER (W)	OUTPUT VOLTAGE (Vo)	MIN. LOAD(Io)	MAX. LOAD(Io)	LOAD REGULATION	LINE REGULATION	RIPPLE & NOISE
EM1067SAR	48W	12~15V	0A	4A	± 5%	± 1%	180mV
EM1067SBR	48W	19~24V	0A	2.52A	± 5%	± 1%	240mV
EM1067SCR	48W	28~36V	0A	1.71A	± 5%	± 1%	360mV
EM1067SDR	48W	48~56V	0A	1A	± 5%	± 1%	560mV
EM1067SER	60W	12~15V	0A	5A	± 5%	± 1%	180mV
EM1067SFR	60W	19~24V	0A	3.15A	± 5%	± 1%	240mV
EM1067SGR	60W	28~36V	0A	2.14A	± 5%	± 1%	360mV
EM1067SHR	60W	48~56V	0A	1.25A	± 5%	± 1%	560mV
EM1067SJR	65W	19~24V	0A	3.42A	± 5%	± 1%	240mV
EM1067SKR	65W	28~36V	0A	2.32A	± 5%	± 1%	360mV
EM1067SLR	65W	48~56V	0A	1.35A	± 5%	± 1%	560mV

NOTE:

- 1 : Ripple & Noise is measured by using 20MHz bandwidth limited oscilloscope and terminated each output with a 0.1uF ceramic capacitor & parallel with 47uF aluminum capacitor at full load and nominal line.
- 2 : Line regulation is defined by changing $\pm 10\%$ of input voltage from nominal line at rated load.
- 3 : Max. Power (W) $\geq V_o \times I_o$

INPUT

- Input Range: 100 to 240 VAC
- Frequency: 50 to 60 Hz
- Input Current: $\leq 2A$
- Inrush Current: $\leq 120A/230VAC$
- Hold up time: $\geq 8.3ms$
- Turn On Time: $\leq 3s$

OUTPUT

- Short Circuit Protection: Auto Recovery
- Over Voltage Protection: Auto Recovery
- Over Current Protection: Auto Recovery
- Over Temperature Protection: Auto Recovery

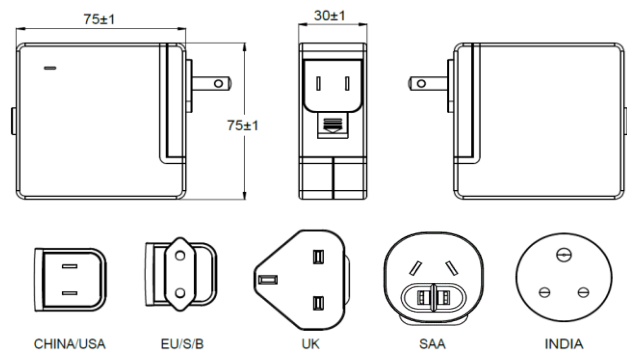
ENVIRONMENT

- Operating Temperature: -20 to 40°C
- Storage Temperature: -20 to 85°C
- Operating Humidity: 10% to 90 %
- Storage Humidity: 5% to 95 %

SAFETY

- Complied with ANSI/AAMI ES60601-1, CAN/CSA-C22.2 No. 60601-1, TUV EN 60601-1, CB IEC 60601-1, CE EMC(EN 60601-1-2), UL 62368-1, CAN/CSA C22.2 No. 62368-1, TUV EN 62368-1, CB IEC 62368-1, FCC Part 15B, CE EMC(EN 55032+EN 55035)

MECHANICAL



- Case Size: 75L x 75W x 30H (mm)
- AC Plug: U: USA, E: EU, K: UK, A: SAA, C: China
S: South Africa, B: Korea, I: India
- Weight: 300g