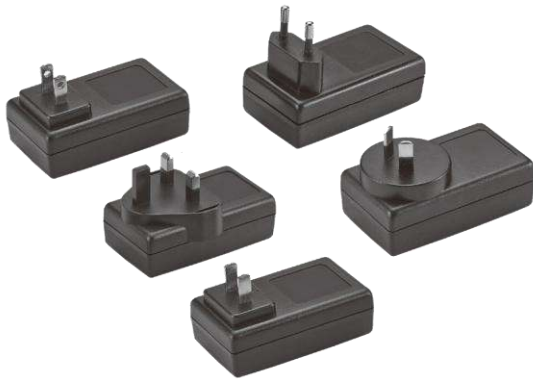


Medical AC/DC Wall Mount Adaptor



Features

- 2 x MOPP, IEC/EN60601-1 Compliance
- LPS Compliance
- Protections :
Short circuit / Over voltage / Over current
- Energy Efficiency up to 87%
- No Load Power Consumption $\leq 0.075W$, $\leq 0.1W$ (For 36~48V)
- MTBF > 100,000 hours

EM102A X Y Z - vv PP

- X:** Output range
Y: AC plug: • U: USA • E: EU • K: UK • A: SAA • C: China
Z: Output type: U (USB-C) or S (SR)
vv: Specified output voltage, i.e. 12 is 12VDC
PP: DC plug type, i.e. Code 01 for 5.5x2.1mm or other options (refer to the appendix page)

General Specification

OUTPUT

MODEL No.	MAX. OUTPUT POWER (W)	OUTPUT VOLTAGE (Vo)	MIN. LOAD(Io)	MAX. LOAD(Io)	LOAD REGULATION	LINE REGULATION	RIPPLE & NOISE
EM102AAYZ	15W	5~8V	0A	3A	± 5%	± 1%	100mV
EM102ABYZ	20W	9~13V	0A	2A	± 5%	± 1%	180mV
EM102ACYZ	20W	14~19V	0A	1.42A	± 5%	± 1%	200mV
EM102ADYZ	20W	20~27V	0A	1A	± 5%	± 1%	250mV
EM102AEYZ	20W	28~35V	0A	0.71A	± 5%	± 1%	280mV
EM102AFYZ	20W	36~48V	0A	0.55A	± 5%	± 1%	360mV
EM102AGYZ	18W	5~8V	0A	3A	± 5%	± 1%	100mV
EM102AHYZ	24W	9~13V	0A	2A	± 5%	± 1%	180mV
EM102AJYZ	24W	14~19V	0A	1.71A	± 5%	± 1%	200mV
EM102AKYZ	24W	20~27V	0A	1.2A	± 5%	± 1%	250mV
EM102AMYZ	24W	28~35V	0A	0.85A	± 5%	± 1%	280mV
EM102ANYZ	24W	36~48V	0A	0.66A	± 5%	± 1%	360mV

NOTE:

- 1 : Ripple & Noise is measured by using 20MHz bandwidth limited oscilloscope and terminated each output with a 0.1uF ceramic capacitor & parallel with 47uF aluminum capacitor at full load and nominal line.
 2 : Line regulation is defined by changing $\pm 10\%$ of input voltage from nominal line at rated load.
 3 : Max. Power (W) $\geq V_o \times I_o$

INPUT

- Input Range 100 to 240 VAC
- Frequency 50 to 60 Hz
- Input Current $\leq 0.8A$
- Inrush Current $\leq 80A/230VAC$
- Hold Up time $\geq 8.3ms$
- Turn On Time $\leq 3s$

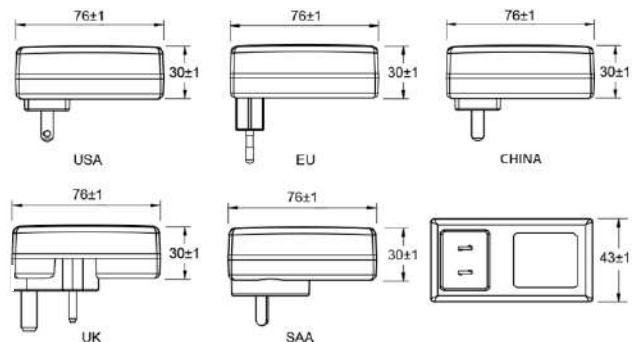
PROTECTION

- Short Circuit Protection Auto Recovery
- Over Voltage Protection Auto Recovery
- Over Current Protection Auto Recovery

ENVIRONMENTAL

- Operating Temperature -20 to 40°C
- Storage Temperature -20 to 85°C
- Operating Humidity 10% to 90 %
- Storage Humidity 5% to 95%

MECHANICAL



- Case Size: 76L x 43W x 30H (mm)
- AC plug: U: USA, E: EU, K: UK, A: SAA, C: China
- Weight: 150g

SAFETY

Complied with ANSI/AAMI ES60601-1, CAN/CSA-C22.2 No. 60601-1, TUV EN 60601-1, CB IEC 60601-1, CE EMC(EN 60601-1-2) UL 62368-1, CAN/CSA C22.2 No. 62368-1, TUV EN 62368-1, CB IEC 62368-1, FCC Part 15B, CE EMC(EN 55032+EN 55035), UKCA